

CHILEAN BLUEBERRY COMMITTEE CROP & EXPORTS REPORT

WEEKLY ADVANCE WEEK 43 (October 21st until 27th, 2024)

...Take a Fresh Look at Chilean Blueberries

EDITED WEEK 44



Powered by **iQonsulting**

Editorial

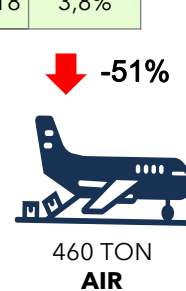
There are no variations in fresh blueberry exports from Chile. Departure volumes continue to be low, the 43rd week was 142 tons, accumulating only 463 tons, 60% less than last season. The days are still rather cold, although there have already been a few days with high temperatures and as most in the industry expect, it is very likely that there will be a strong push in mid-November, when the Central North zone begins. What is currently observed in Central and Southern regions, is a greater quantity of flowers and high fruit set as a result of the good winter cold, therefore, it is expected that volumes will be level with those estimated when this area begins, which has also an even flowering which will facilitate

the ripening and harvest.

As already mentioned, the domestic market continues to play an important role, absorbing part of the harvest and maintaining the supply for export focused on attractive varieties of new genetics. Currently 78% is made up of the following varieties: CV1219; Ventura; Emerald; Sekoya pop and Eureka Sunrise. The most frequent destinations for this early fruit continue to be Asian countries, with shipments mainly by air. The news of the week is that the first sea shipment was carried out with only 3 tons.

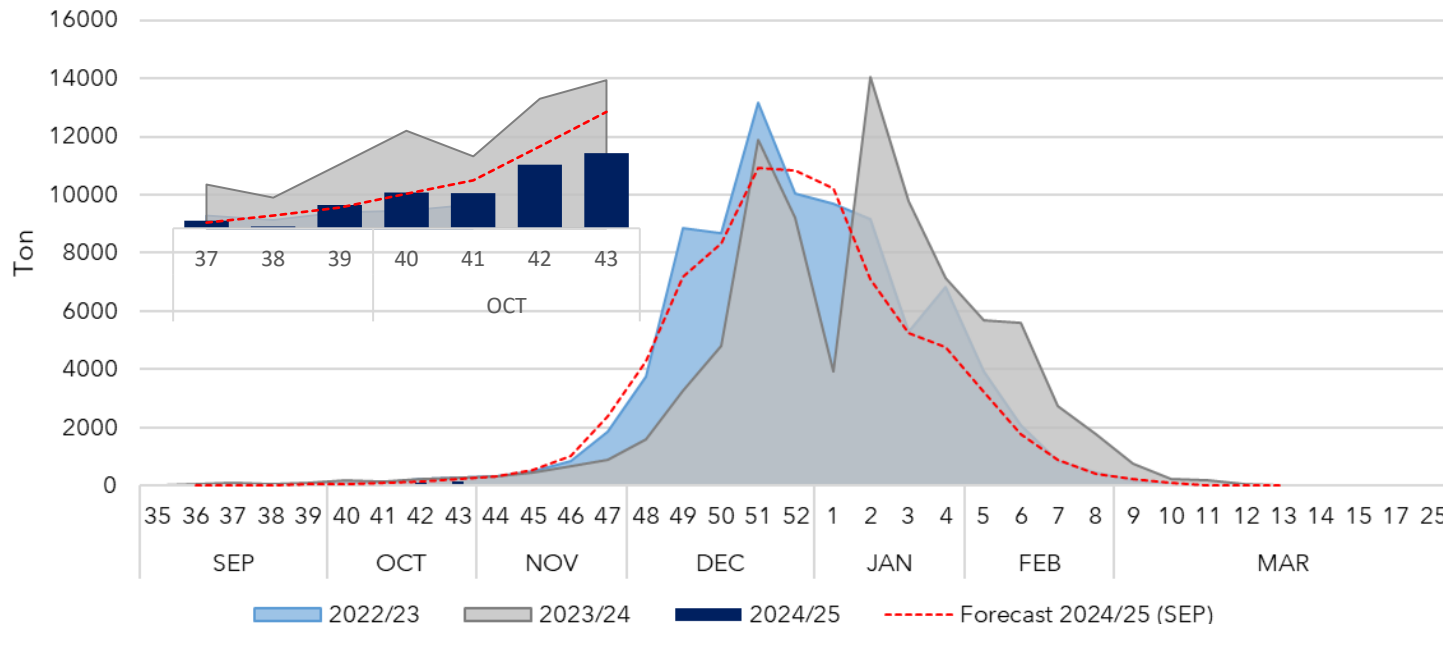
WEEKLY ADVANCE WEEK 43

Month	Week	Export Progress (Ton)					Total (Ton)			Organic		Export Progress vs total estimated
		USA	EUR. CONT.	UK	ASIA	OTHER	2024/25	2023/24	Accum 2024/25	Accum	Share %	
Sep	37				14		14	82	21	0	0%	-24%
Sep	38				3		3	58	24	0	0%	
Sep	39	1			43		44	120	68	0	0%	
Oct	40	3			65		67	184	135	0	0%	
Oct	41	4			63		66	135	201	3	1,3%	
Oct	42	11			109		120	244	321	9	2,8%	
Oct	43	10			132		142	279	463	18	3,8%	
Total to W-43 2024/25		28	0	0	435	0	463					
Total to W-43 2023/24		384	11	0	772	0	1166					
Total to W-43 2022/23		5	0	0	729	0	733					
VAR 24/25 vs 23/24		-93%	-100%		-44%		-60%					
VAR 24/25 vs 22/23			-100%	-100%	-40%		-37%					

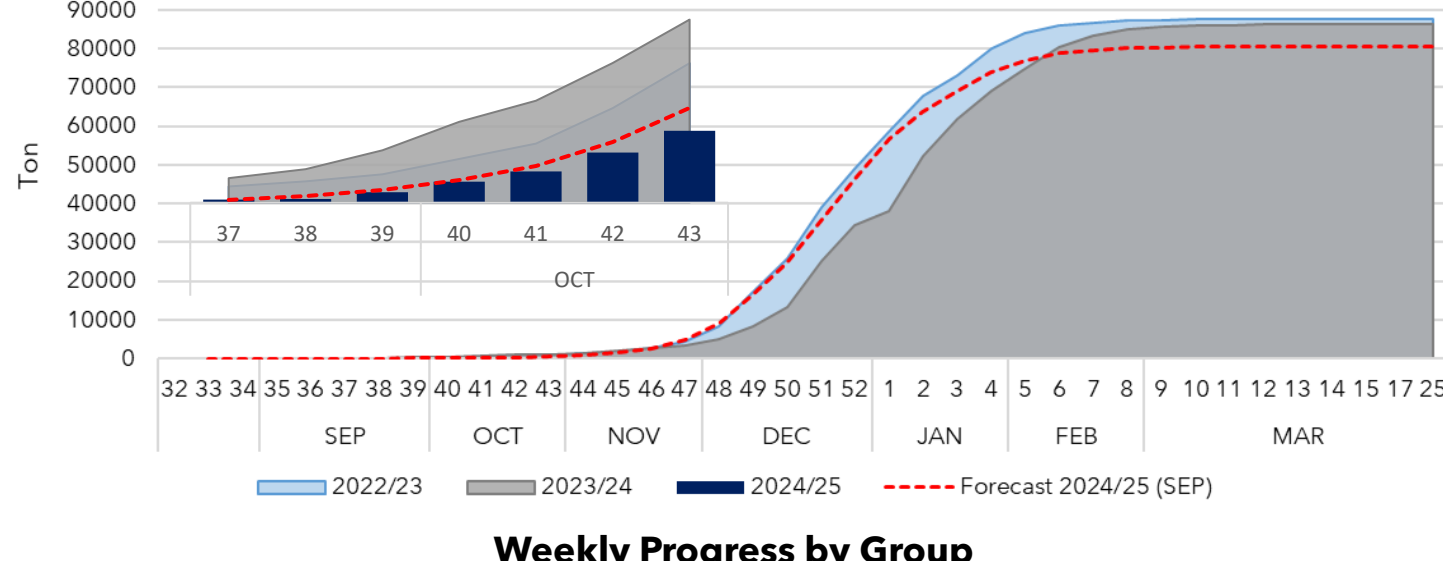


BLUEBERRY WEEKLY SHIPMENT

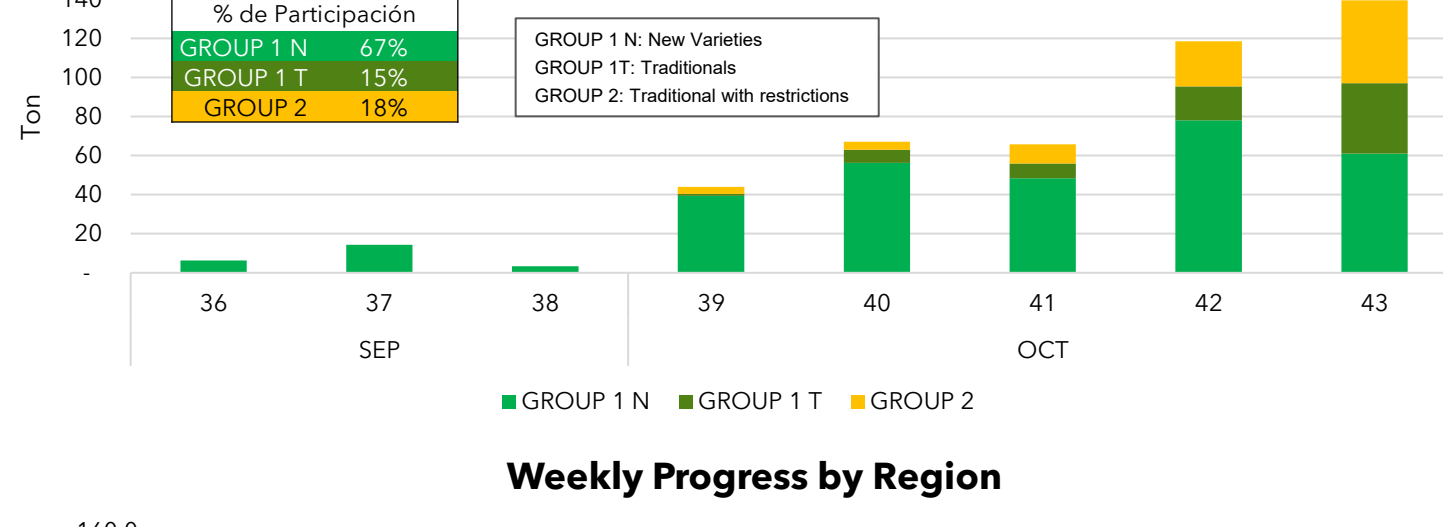
Weekly Progress



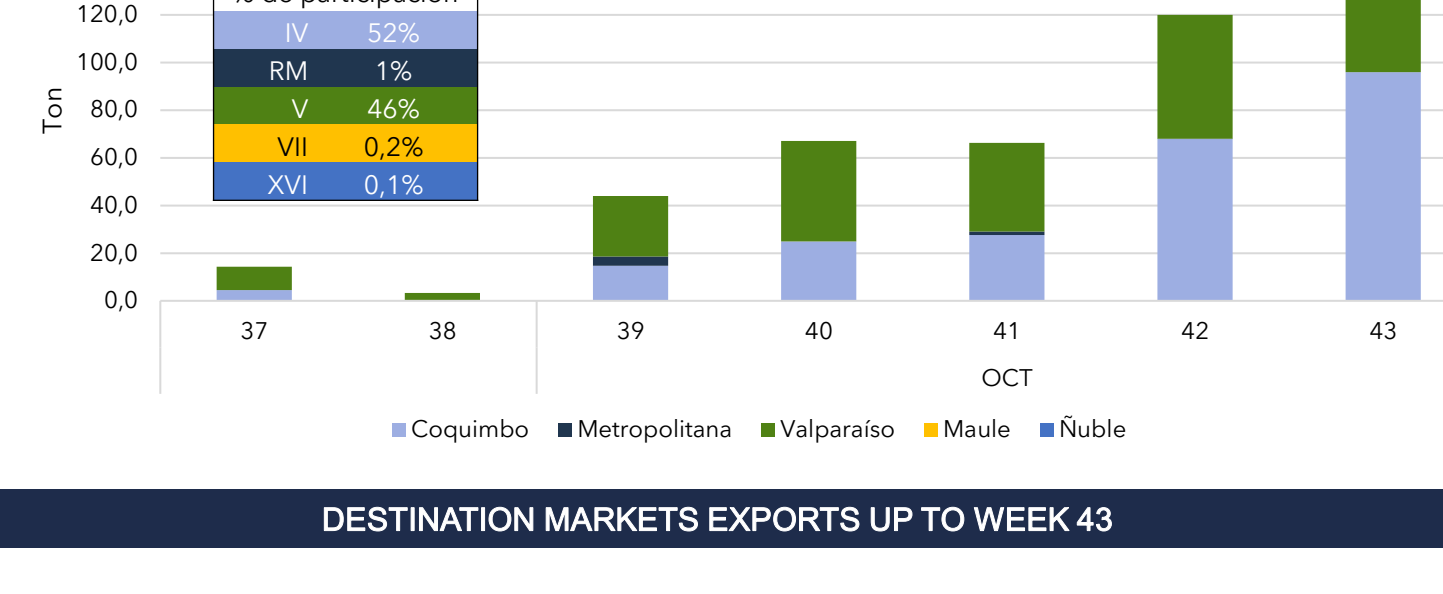
Accumulated weekly progress



Weekly Progress by Group

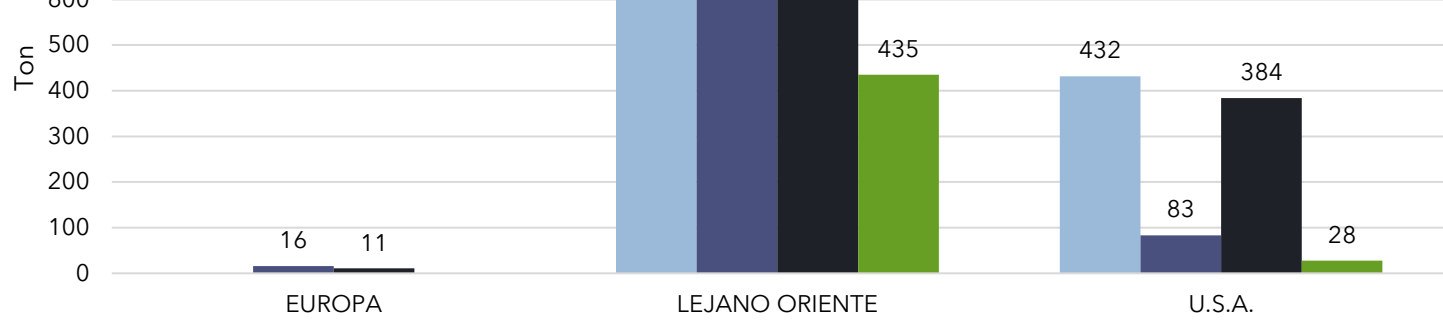


Weekly Progress by Region



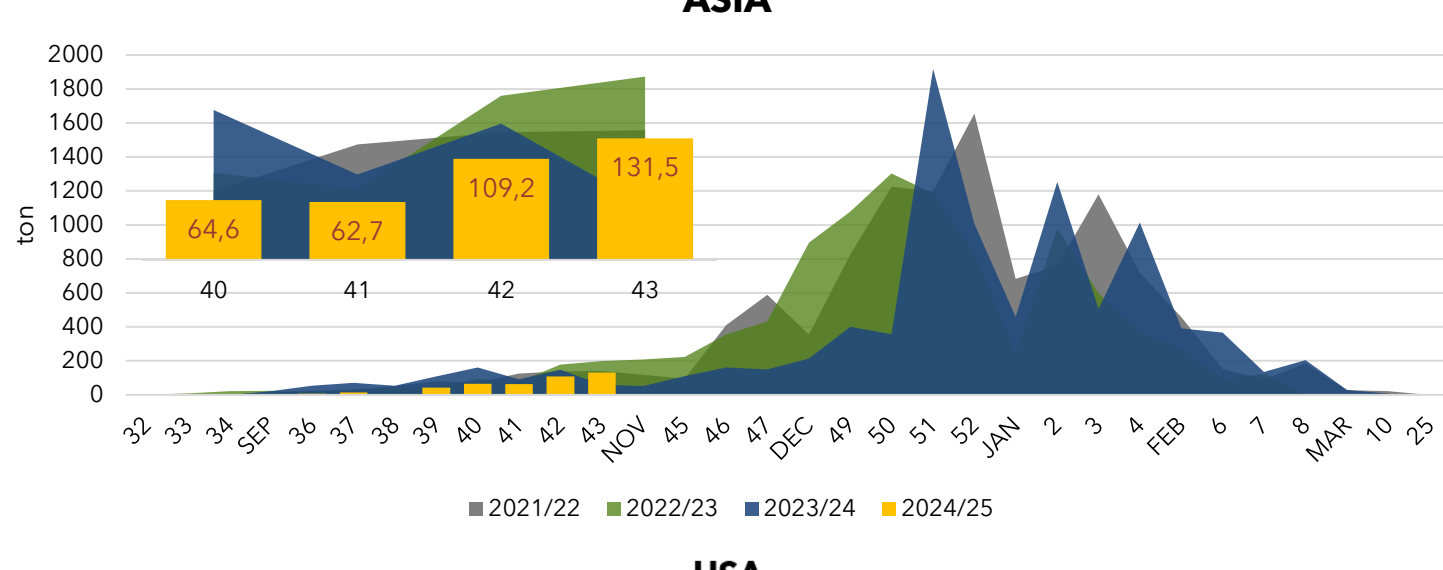
DESTINATION MARKETS EXPORTS UP TO WEEK 43

Total volume by market up to week 43

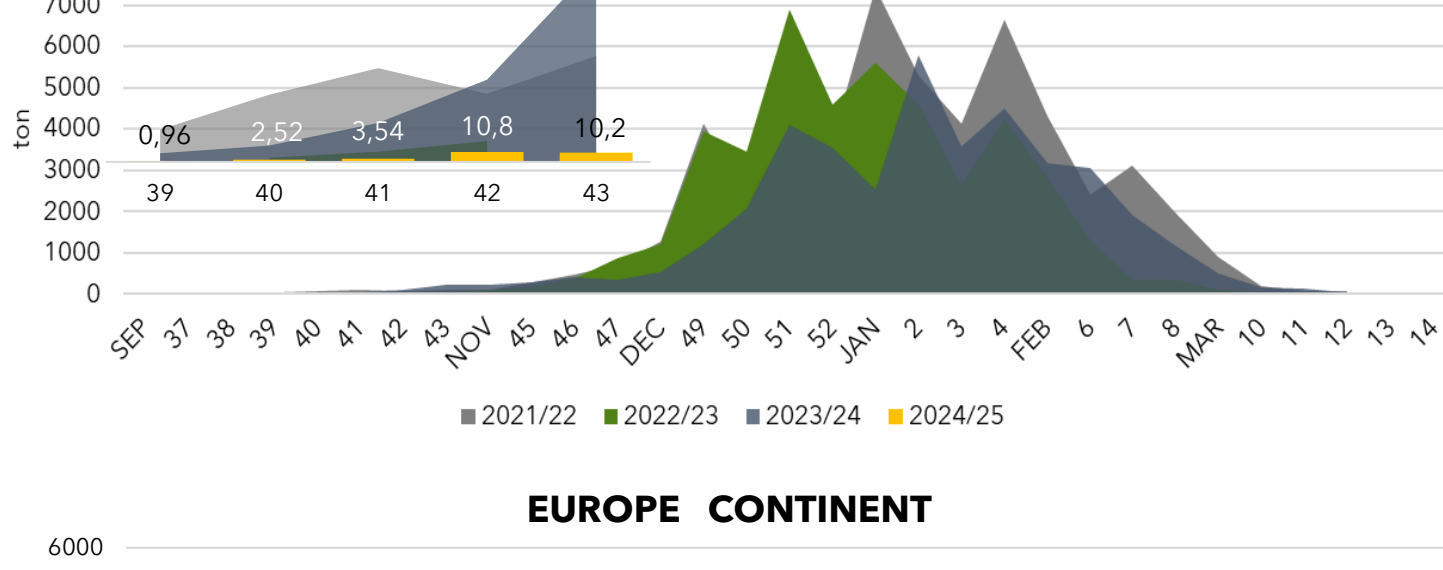


WEEKLY SHIPMENTS PER MARKET

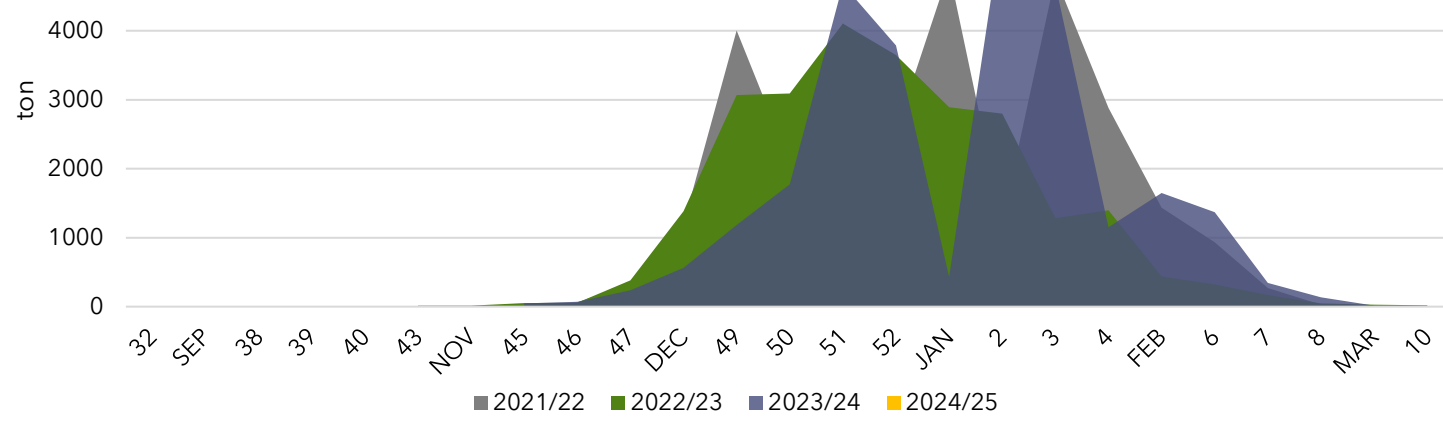
ASIA



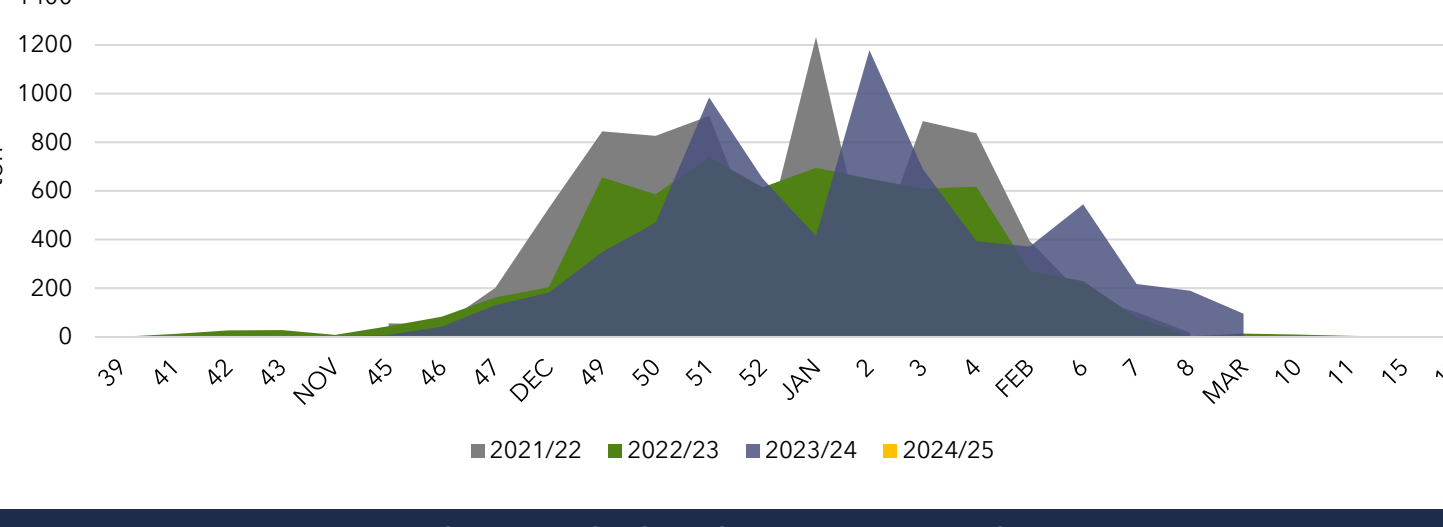
USA



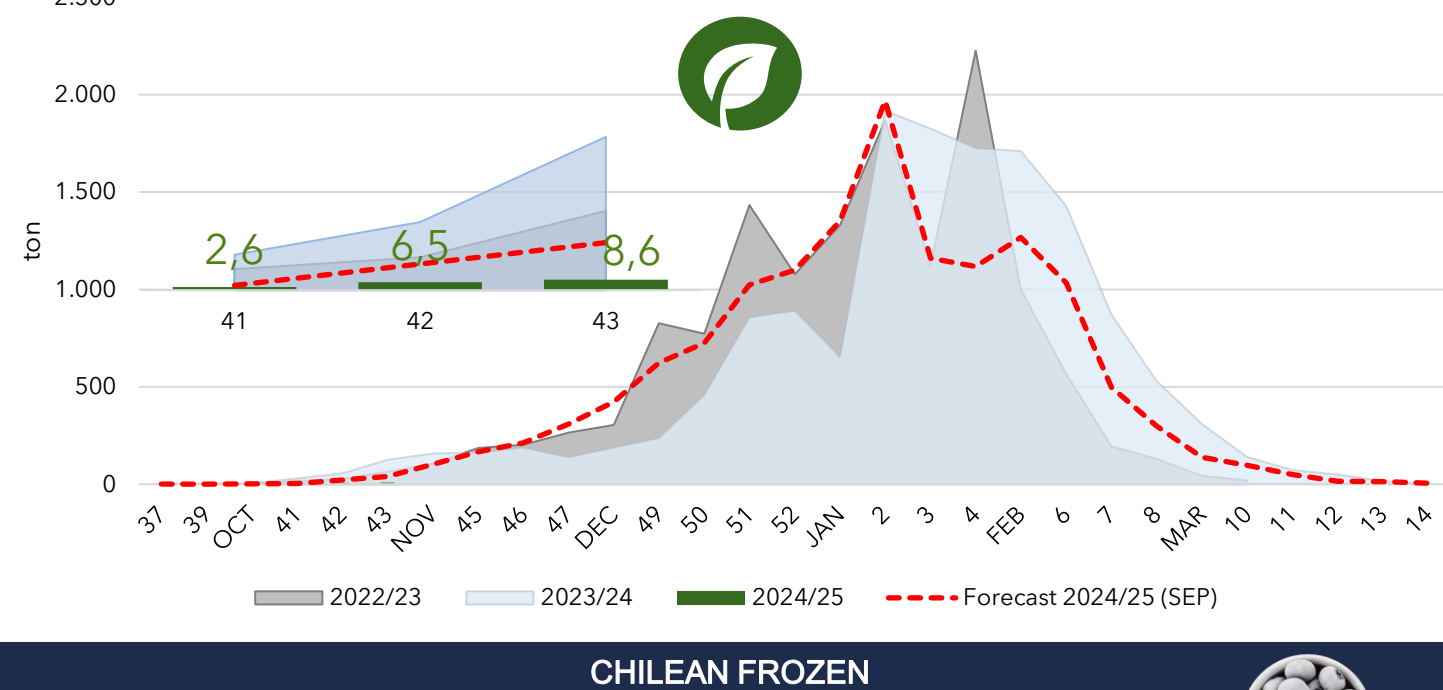
EUROPE CONTINENT



UK

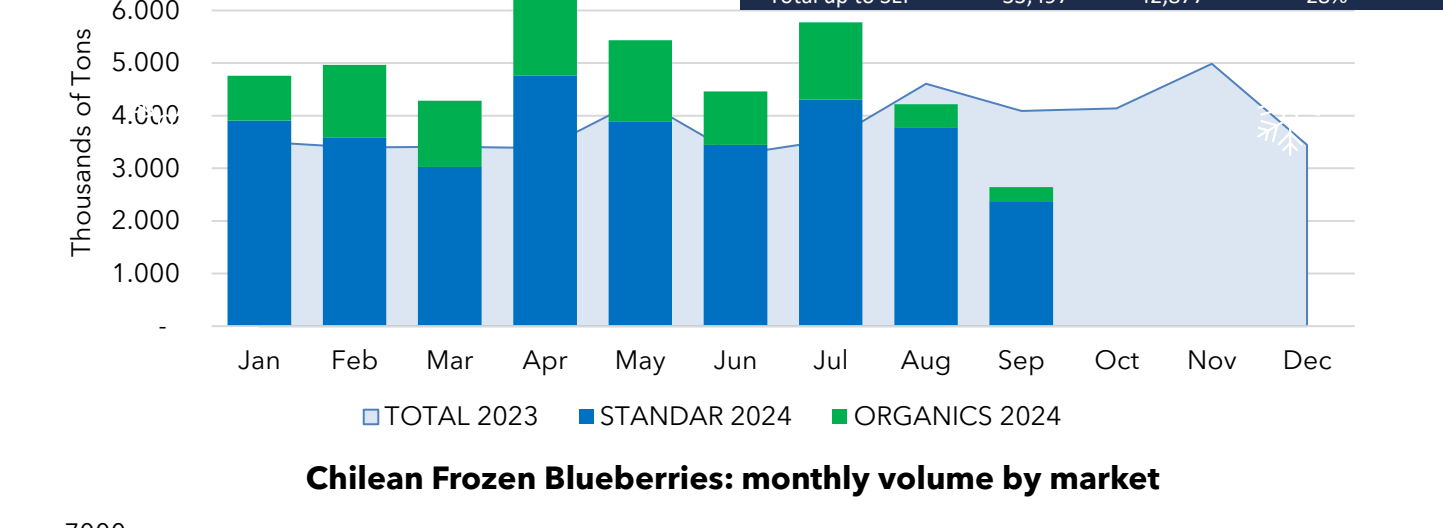


CHILEAN ORGANIC WEEKLY ADVANCE

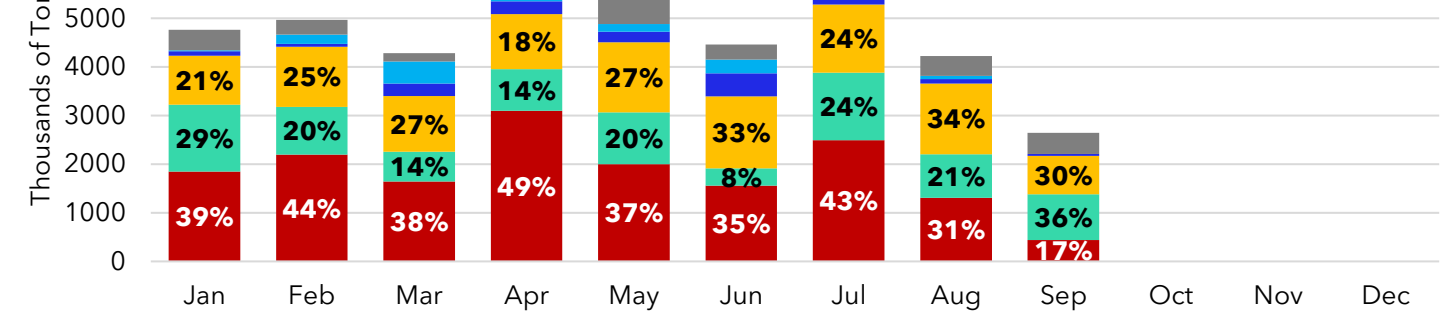


CHILEAN FROZEN

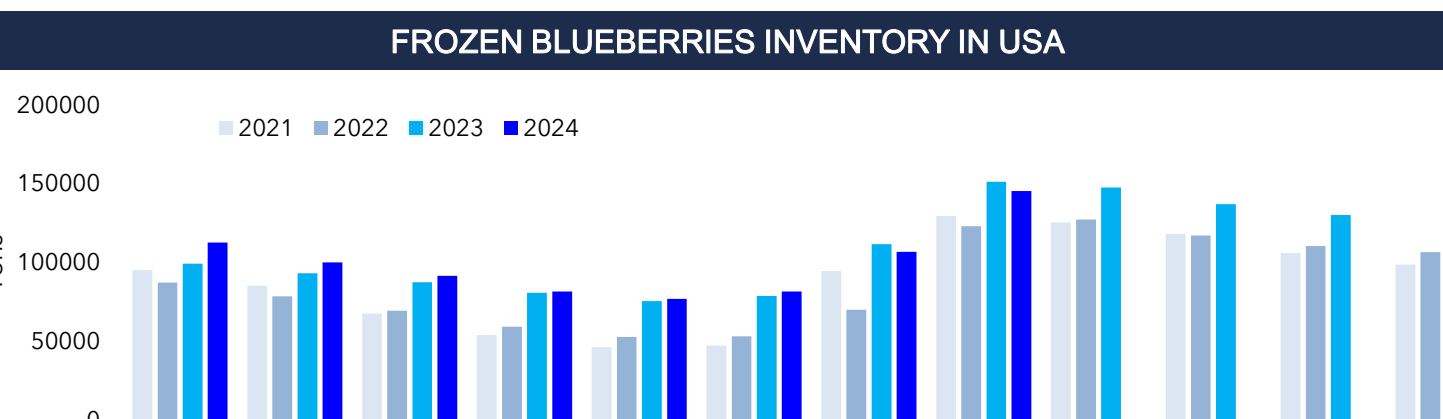
Chilean Frozen Blueberries: monthly departures. All markets.



Chilean Frozen Blueberries: monthly volume by market



FROZEN BLUEBERRIES INVENTORY IN USA



...Take a Fresh Look at Chilean Blueberries